





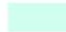



POPE MINNESOTA
COUNTY

**PROPOSED
REZONING
STARBUCK SOUTH**

*This map is for general reference purposes only and should not be relied on for final determination of zoning district boundaries.

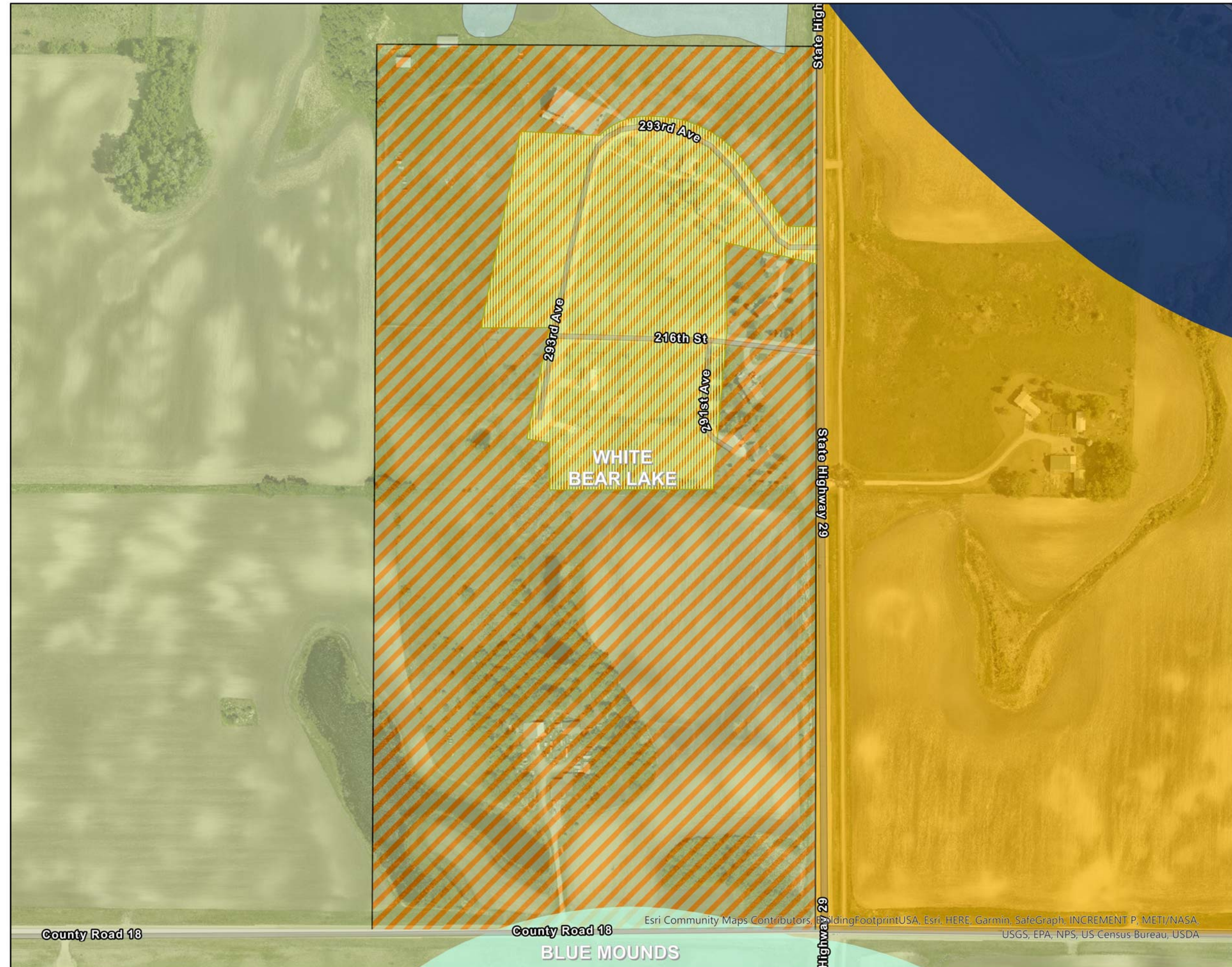
Legend

-  Townships
- Pope County Zoning Districts**
- General Zones**
-  Residential (R)
-  Non-Intensive Agriculture (A-1)
-  Residential (R) (PROPOSED)
- Specific & Shoreland Zones**
-  Special Residential (SR)
-  Shoreland-General Development (S-GD)
-  Shoreland-Natural Environment (S-NE)
- Public Water Inventory (PWI)**
-  Public Water Basin



Publish Date: 12/28/2020

Spatial Reference:
Datum: NAD 1983 HARN Adj MN Pope
Projection: Lambert Conformal Conic



Esri Community Maps Contributors, BuildingFootprintUSA, Esri, HERE, Garmin, SafeGraph, INCREMENT P, METI/NASA, USGS, EPA, NPS, US Census Bureau, USDA