




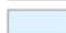



POPE MINNESOTA
COUNTY

**PROPOSED
REZONING
STARBUCK EAST**

*This map is for general reference purposes only and should not be relied on for final determination of zoning district boundaries.

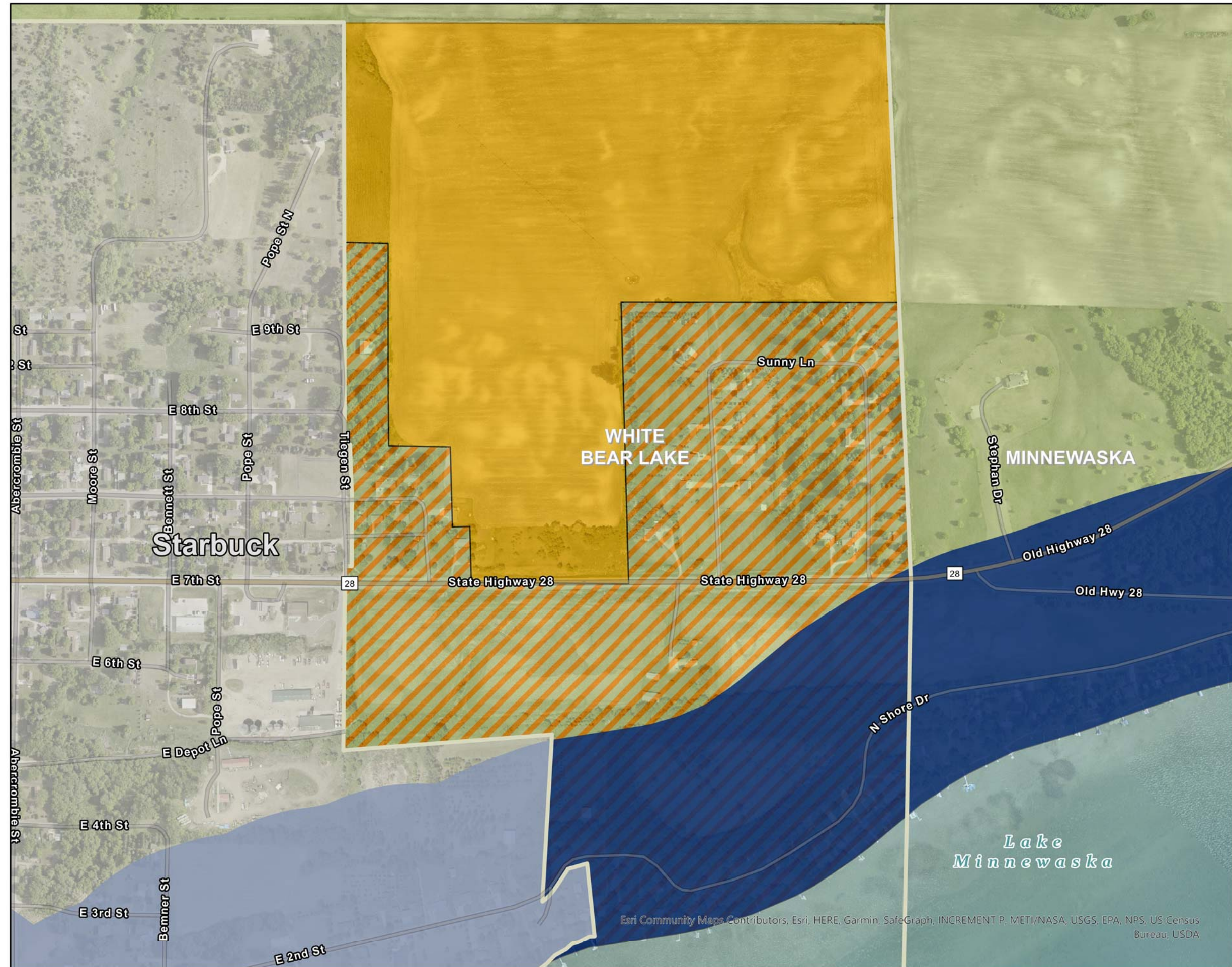
Legend

-  Townships
- Pope County Zoning Districts**
- General Zones**
-  Residential (R)
-  Non-Intensive Agriculture (A-1)
-  Residential (R) (PROPOSED)
- Specific & Shoreland Zones**
-  Shoreland-General Development (S-GD)
- Public Water Inventory (PWI)**
-  Public Water Basin
- Not Subject to County Zoning**
-  Municipalities



Publish Date: 12/28/2020
Spatial Reference:
Datum: NAD 1983 HARN Adj MN Pope
Projection: Lambert Conformal Conic

Pope County
Land & Resource Management



Esri Community Maps Contributors, Esri, HERE, Garmin, SafeGraph, INCREMENT P, METI/NASA, USGS, EPA, NPS, US Census Bureau, USDA