







POPE MINNESOTA  
 COUNTY  
**PROPOSED  
 REZONING  
 GLENWOOD  
 TOWNSHIP (#2)**

**Legend**




-  Tax Parcels
-  Quarter Quarter Section
-  Quarter Section
-  Section

**Proposed Zoning**

**Proposed General Zones**

-  Residential (R)
-  Industrial (I)

**Current Zoning**

-  Shoreland-General Development (S-GD)
-  Residential (R)
-  Non-Intensive Agriculture (A-1)

**Not Subject to County Zoning**

-  Municipality



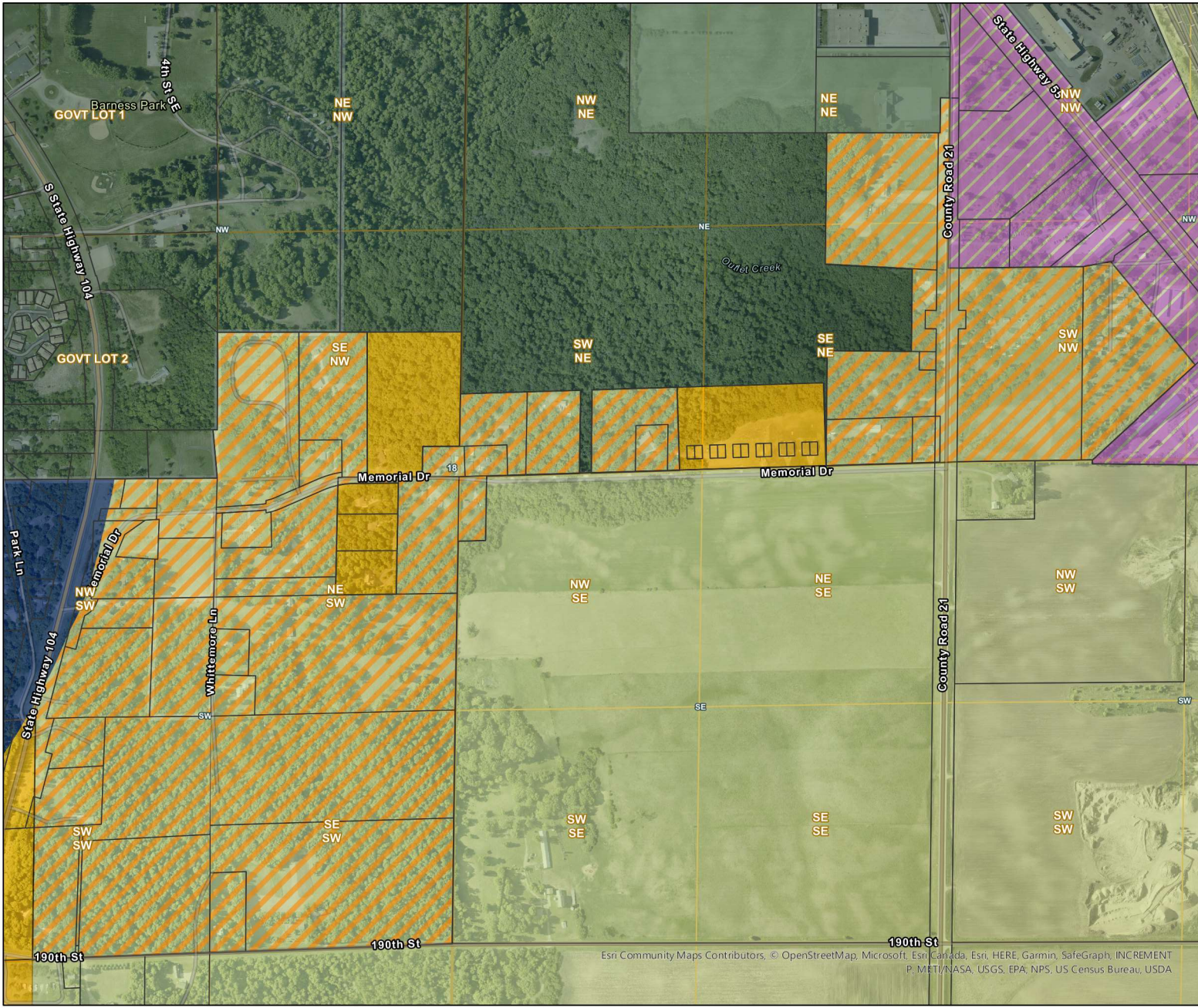
Scale: 1:6,226

Publish Date: 11/2/2021

Author: Jessica Hill, Land Use Specialist  
 Pope County Land & Resource Management

Spatial Reference:

Datum: NAD 1983 HARN Adj MN Pope  
 Projection: Lambert Conformal Conic



Esri Community Maps Contributors, © OpenStreetMap, Microsoft, Esri, HERE, Garmin, SafeGraph, INCREMENT P, METI/NASA, USGS, EPA, NPS, US Census Bureau, USDA