

OFFICIAL ZONING MAP*

*This map is for general reference purposes only and should not be relied on for final determination of zoning district boundaries. It includes rezoning revisions as approved by the Pope County Board of Commissioners.

Legend Pope County Zoning Districts

- General Zones**
- Residential (R)
 - Non-Intensive Agriculture (A-1)
 - Agriculture Protection (A-2)
 - Industrial (I)
 - Commercial (C)
- Specific & Shoreland Zones**
- Special Protection (SP)
 - Special Residential (SR)
 - Special Commercial (SC)
 - Shoreland-General Development (S-GD)
 - Shoreland-Recreational Development (S-RD)
 - Shoreland-Natural Environment (S-NE)
 - Shoreland-Rivers and Streams (S-RS)
- Pre-1999 Rezoning**
- Residential Overlay
 - Commercial Overlay
 - General Use Overlay
- Not Subject to County Zoning**
- Municipalities
- Public Water Inventory (PWI)**
- Public Water Watercourse
 - Public Ditch/Altered Natural Watercourse
 - Public Water Basin
 - Public Water Wetland



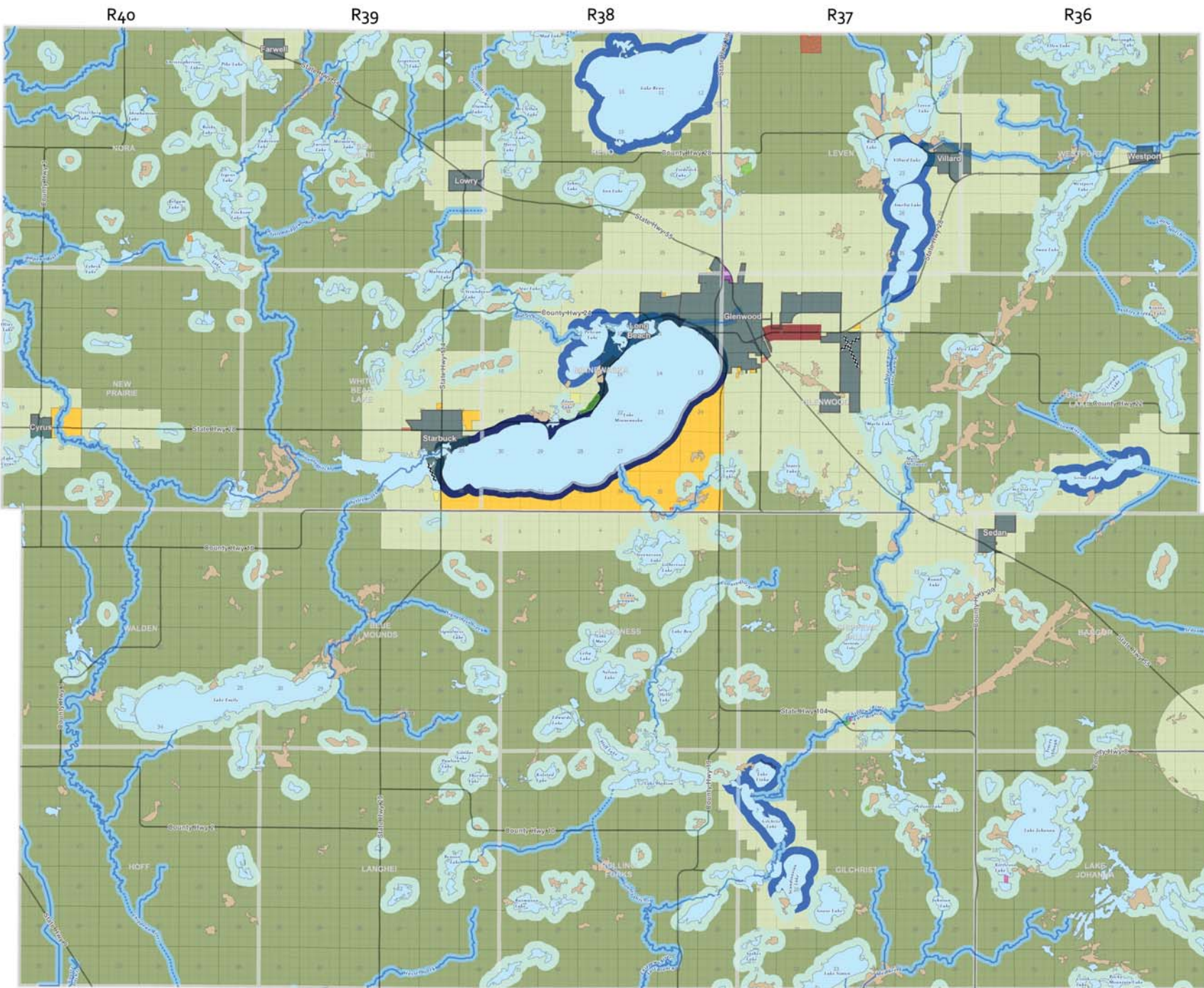
0 0.5 1 2 3 4 Miles

Scale 1:49,751



Publish Date: 1/7/2020

Spatial Reference:
Datum: NAD 1983 HARN Adj MN Pope
Projection: Lambert Conformal Conic



Adopted with Revisions
7 January 2020

Gordy Wagner
Chairman Gordy Wagner, Pope County Board of Commissioners

Kersten Kappmeyer
Kersten Kappmeyer, Pope County Coordinator